

“clear innovation”

OPGD Lens System for Osram Golden Dragon LEDs



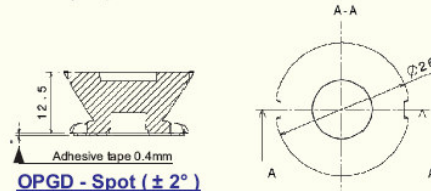
L₂Optics OPGD-1 base lenses position easily and accurately over the Golden Dragon LED. They are easy to fix onto the PCB using the integral self-adhesive pad.

The snap-lock sub-lenses attach easily, are very secure and do not move or drop out, once in place.

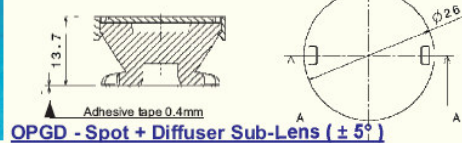
There are three different sub-lens illumination patterns available: spot, wide and oval.



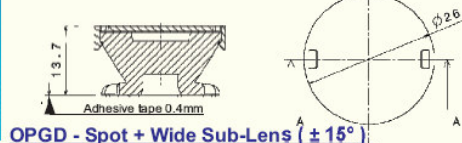
OPGD Series Base Spot Lens (OPGD-1-002)



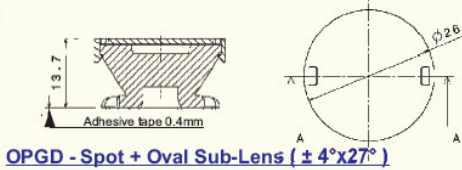
OPGD Diffuser Sub-Lens (OPGD-1-DIF5)



OPGD Wide Sub-Lens (OPGD-1-015S)



OPGD Oval Sub-Lens (OPGD-1-427S)

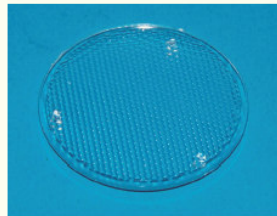


L₂Optics OPGD-3 spot triple lens is fixed over Golden Dragon LEDs on the PCB using locating pegs.

The snap-lock medium sub-lenses attaches easily, using locating pegs into the base lens.



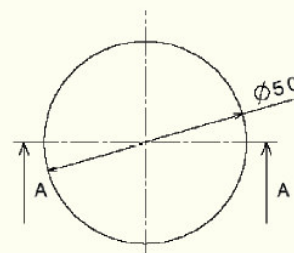
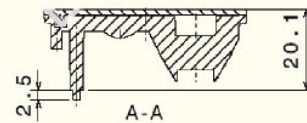
OPGD-3 Base Spot Lens (OPGD-3-006)



OPGD-3 Wide Sub-Lens (OPGD-3-015S)



OPGD-3 Base Spot Lens with Wide Sub-Lens Fitted



OPGD-3 - Spot + Wide Sub-Lens ($\pm 15^\circ$)

Base Lenses

OPGD-1-002	OPGD Series Spot Base Module - 2°
OPGD-3-006	OPGD Triple Spot Base Module - 6°

Sub-Lenses

OPGD-1-DIF5	OPGD Series Spot Diffuser Sub-Lens - 5°
OPGD-1-015S	OPGD Series Wide Sub-Lens - 15°
OPGD-1-427S	OPGD Series Oval Sub-Lens - $4^\circ \times 27^\circ$
OPGD-3-015S	OPGD Triple Wide Sub-Lens - 15°